



BELIEVE. ACHIEVE. SUCCEED.

TEAM 79 | TERM ONE NEWSLETTER | MONDAY 4TH FEBRUARY 2019

Talofa lava. My name is Junior Peilua and I will be your child's form teacher.

I would like to welcome our new students and their families not only to Team 79 but to Manurewa Intermediate and for those who were with us last year, welcome back.

It is an honour and a privilege to be teaching and leading your child this year. I am a strong believer that your child is able to make immense progress in all areas of school life with the right guidance and support. Our Kauri Aiga mantra "Believe. Achieve. Succeed." will hopefully be lived by your child in the way they tackle the demands of Manurewa Intermediate School life. My aim is to instil belief and provide that guidance and support for your child to do this.

I am extremely excited about what lies ahead of us this year. The purpose of this class is to use the students' advanced ability and passion for sport as a medium to teach such skills as leadership, goal setting and character development. We will also explore things such as anatomy, nutrition and training (all vital areas for someone who may be involved in sports when they are older). This will all be taught alongside the normal Manurewa Intermediate learning expectations. While this may sound like a lot of work, your child would not have been selected if we did not think they were capable.

This is an amazing opportunity and accordingly, your child will have to meet certain expectations to maintain their position within the class. Most of these expectations are simple; such as being present at school on time every day, having the right uniform and gear to learn, be involved in and committed to school sport at MI, as well as using the school's "Keys to Success" (We look after each other, We look after our property and environment and We look after ourselves).

This term the SMART Target is: **Right place, right time, right gear!** Please talk to your child each week about how they are progressing with our SMART Target.

Your child will have the following teachers for Term One:

Math	Mrs Baljit Kaur
Humanities	Ms Sharmayne Hardwidge
Science	Ms Charlotte Fox
Visual Art	Mr Junior Peilua
Languages	Whaea Iri
PE	Mr Rob Shephard

Your role at home is as important as mine is in the classroom. To that end, it is vital that we have open and on-going communication about your child. If you see either of these numbers 2668268 (SCHOOL) or 0212055033 (MY CELL PHONE) please pick up - it's just me worried about your child because they are absent from school!

Please don't hesitate to pick up the phone or come in and see me at any time if you have concerns or just wish to discuss your child's learning. You don't need to wait for Student Involved Conferences, I would love to meet with you at any time throughout the school year.

Fa'afetai tele lava

Junior Peilua

About Me

I am a proud Samoan, Tokelauan and Tuvaluan. I started teaching at Manurewa Intermediate in 2013 and love it here! I am married to my wife Michelle and together we have three children named Kezia (6), Ada (4), and Luka (3). Family is important to me and this reflects on my teaching practice. I am originally from Mt Albert. Sport has played a massive part in my life. I have played competitive and representative Rugby, League, and Volleyball.



IMPORTANT DATES IN TERM ONE

- MON 4 FEB - ANNUAL CONTACTS (M. A. MANUREWA)
- TUE 5 FEB - COMMUNITY DAY (P. MANUREWA)
- WED 6 FEB - ANNUAL DAY
- THU 7 FEB - 10 FEB - RUGBY
- FRI 8 FEB - 10 FEB - ANNUAL DAY (M. MANUREWA)
- SAT 9 FEB - 10 FEB - ANNUAL DAY (M. MANUREWA)
- SUN 10 FEB - 10 FEB - ANNUAL DAY (M. MANUREWA)
- MON 11 FEB - 10 FEB - ANNUAL DAY (M. MANUREWA)
- TUE 12 FEB - 10 FEB - ANNUAL DAY (M. MANUREWA)
- WED 13 FEB - 10 FEB - ANNUAL DAY (M. MANUREWA)
- THU 14 FEB - 10 FEB - ANNUAL DAY (M. MANUREWA)
- FRI 15 FEB - 10 FEB - ANNUAL DAY (M. MANUREWA)
- SAT 16 FEB - 10 FEB - ANNUAL DAY (M. MANUREWA)
- SUN 17 FEB - 10 FEB - ANNUAL DAY (M. MANUREWA)
- MON 18 FEB - 10 FEB - ANNUAL DAY (M. MANUREWA)
- TUE 19 FEB - 10 FEB - ANNUAL DAY (M. MANUREWA)
- WED 20 FEB - 10 FEB - ANNUAL DAY (M. MANUREWA)
- THU 21 FEB - 10 FEB - ANNUAL DAY (M. MANUREWA)
- FRI 22 FEB - 10 FEB - ANNUAL DAY (M. MANUREWA)
- SAT 23 FEB - 10 FEB - ANNUAL DAY (M. MANUREWA)
- SUN 24 FEB - 10 FEB - ANNUAL DAY (M. MANUREWA)
- MON 25 FEB - 10 FEB - ANNUAL DAY (M. MANUREWA)
- TUE 26 FEB - 10 FEB - ANNUAL DAY (M. MANUREWA)
- WED 27 FEB - 10 FEB - ANNUAL DAY (M. MANUREWA)
- THU 28 FEB - 10 FEB - ANNUAL DAY (M. MANUREWA)
- FRI 29 FEB - 10 FEB - ANNUAL DAY (M. MANUREWA)
- SAT 30 FEB - 10 FEB - ANNUAL DAY (M. MANUREWA)
- SUN 1 MAR - 10 FEB - ANNUAL DAY (M. MANUREWA)
- MON 5 MAR - 10 FEB - ANNUAL DAY (M. MANUREWA)
- TUE 6 MAR - 10 FEB - ANNUAL DAY (M. MANUREWA)
- WED 7 MAR - 10 FEB - ANNUAL DAY (M. MANUREWA)
- THU 8 MAR - 10 FEB - ANNUAL DAY (M. MANUREWA)
- FRI 9 MAR - 10 FEB - ANNUAL DAY (M. MANUREWA)
- SAT 10 MAR - 10 FEB - ANNUAL DAY (M. MANUREWA)
- SUN 11 MAR - 10 FEB - ANNUAL DAY (M. MANUREWA)
- MON 12 MAR - 10 FEB - ANNUAL DAY (M. MANUREWA)
- TUE 13 MAR - 10 FEB - ANNUAL DAY (M. MANUREWA)
- WED 14 MAR - 10 FEB - ANNUAL DAY (M. MANUREWA)
- THU 15 MAR - 10 FEB - ANNUAL DAY (M. MANUREWA)
- FRI 16 MAR - 10 FEB - ANNUAL DAY (M. MANUREWA)
- SAT 17 MAR - 10 FEB - ANNUAL DAY (M. MANUREWA)
- SUN 18 MAR - 10 FEB - ANNUAL DAY (M. MANUREWA)
- MON 19 MAR - 10 FEB - ANNUAL DAY (M. MANUREWA)
- TUE 20 MAR - 10 FEB - ANNUAL DAY (M. MANUREWA)
- WED 21 MAR - 10 FEB - ANNUAL DAY (M. MANUREWA)
- THU 22 MAR - 10 FEB - ANNUAL DAY (M. MANUREWA)
- FRI 23 MAR - 10 FEB - ANNUAL DAY (M. MANUREWA)
- SAT 24 MAR - 10 FEB - ANNUAL DAY (M. MANUREWA)
- SUN 25 MAR - 10 FEB - ANNUAL DAY (M. MANUREWA)
- MON 26 MAR - 10 FEB - ANNUAL DAY (M. MANUREWA)
- TUE 27 MAR - 10 FEB - ANNUAL DAY (M. MANUREWA)
- WED 28 MAR - 10 FEB - ANNUAL DAY (M. MANUREWA)
- THU 29 MAR - 10 FEB - ANNUAL DAY (M. MANUREWA)
- FRI 30 MAR - 10 FEB - ANNUAL DAY (M. MANUREWA)
- SAT 31 MAR - 10 FEB - ANNUAL DAY (M. MANUREWA)
- SUN 1 APR - 10 FEB - ANNUAL DAY (M. MANUREWA)
- MON 2 APR - 10 FEB - ANNUAL DAY (M. MANUREWA)
- TUE 3 APR - 10 FEB - ANNUAL DAY (M. MANUREWA)
- WED 4 APR - 10 FEB - ANNUAL DAY (M. MANUREWA)
- THU 5 APR - 10 FEB - ANNUAL DAY (M. MANUREWA)
- FRI 6 APR - 10 FEB - ANNUAL DAY (M. MANUREWA)
- SAT 7 APR - 10 FEB - ANNUAL DAY (M. MANUREWA)
- SUN 8 APR - 10 FEB - ANNUAL DAY (M. MANUREWA)
- MON 9 APR - 10 FEB - ANNUAL DAY (M. MANUREWA)
- TUE 10 APR - 10 FEB - ANNUAL DAY (M. MANUREWA)
- WED 11 APR - 10 FEB - ANNUAL DAY (M. MANUREWA)
- THU 12 APR - 10 FEB - ANNUAL DAY (M. MANUREWA)
- FRI 13 APR - 10 FEB - ANNUAL DAY (M. MANUREWA)
- SAT 14 APR - 10 FEB - ANNUAL DAY (M. MANUREWA)
- SUN 15 APR - 10 FEB - ANNUAL DAY (M. MANUREWA)
- MON 16 APR - 10 FEB - ANNUAL DAY (M. MANUREWA)
- TUE 17 APR - 10 FEB - ANNUAL DAY (M. MANUREWA)
- WED 18 APR - 10 FEB - ANNUAL DAY (M. MANUREWA)
- THU 19 APR - 10 FEB - ANNUAL DAY (M. MANUREWA)
- FRI 20 APR - 10 FEB - ANNUAL DAY (M. MANUREWA)
- SAT 21 APR - 10 FEB - ANNUAL DAY (M. MANUREWA)
- SUN 22 APR - 10 FEB - ANNUAL DAY (M. MANUREWA)
- MON 23 APR - 10 FEB - ANNUAL DAY (M. MANUREWA)
- TUE 24 APR - 10 FEB - ANNUAL DAY (M. MANUREWA)
- WED 25 APR - 10 FEB - ANNUAL DAY (M. MANUREWA)
- THU 26 APR - 10 FEB - ANNUAL DAY (M. MANUREWA)
- FRI 27 APR - 10 FEB - ANNUAL DAY (M. MANUREWA)
- SAT 28 APR - 10 FEB - ANNUAL DAY (M. MANUREWA)
- SUN 29 APR - 10 FEB - ANNUAL DAY (M. MANUREWA)
- MON 30 APR - 10 FEB - ANNUAL DAY (M. MANUREWA)
- TUE 1 MAY - 10 FEB - ANNUAL DAY (M. MANUREWA)
- WED 2 MAY - 10 FEB - ANNUAL DAY (M. MANUREWA)
- THU 3 MAY - 10 FEB - ANNUAL DAY (M. MANUREWA)
- FRI 4 MAY - 10 FEB - ANNUAL DAY (M. MANUREWA)
- SAT 5 MAY - 10 FEB - ANNUAL DAY (M. MANUREWA)
- SUN 6 MAY - 10 FEB - ANNUAL DAY (M. MANUREWA)
- MON 7 MAY - 10 FEB - ANNUAL DAY (M. MANUREWA)
- TUE 8 MAY - 10 FEB - ANNUAL DAY (M. MANUREWA)
- WED 9 MAY - 10 FEB - ANNUAL DAY (M. MANUREWA)
- THU 10 MAY - 10 FEB - ANNUAL DAY (M. MANUREWA)
- FRI 11 MAY - 10 FEB - ANNUAL DAY (M. MANUREWA)
- SAT 12 MAY - 10 FEB - ANNUAL DAY (M. MANUREWA)
- SUN 13 MAY - 10 FEB - ANNUAL DAY (M. MANUREWA)
- MON 14 MAY - 10 FEB - ANNUAL DAY (M. MANUREWA)
- TUE 15 MAY - 10 FEB - ANNUAL DAY (M. MANUREWA)
- WED 16 MAY - 10 FEB - ANNUAL DAY (M. MANUREWA)
- THU 17 MAY - 10 FEB - ANNUAL DAY (M. MANUREWA)
- FRI 18 MAY - 10 FEB - ANNUAL DAY (M. MANUREWA)
- SAT 19 MAY - 10 FEB - ANNUAL DAY (M. MANUREWA)
- SUN 20 MAY - 10 FEB - ANNUAL DAY (M. MANUREWA)
- MON 21 MAY - 10 FEB - ANNUAL DAY (M. MANUREWA)
- TUE 22 MAY - 10 FEB - ANNUAL DAY (M. MANUREWA)
- WED 23 MAY - 10 FEB - ANNUAL DAY (M. MANUREWA)
- THU 24 MAY - 10 FEB - ANNUAL DAY (M. MANUREWA)
- FRI 25 MAY - 10 FEB - ANNUAL DAY (M. MANUREWA)
- SAT 26 MAY - 10 FEB - ANNUAL DAY (M. MANUREWA)
- SUN 27 MAY - 10 FEB - ANNUAL DAY (M. MANUREWA)
- MON 28 MAY - 10 FEB - ANNUAL DAY (M. MANUREWA)
- TUE 29 MAY - 10 FEB - ANNUAL DAY (M. MANUREWA)
- WED 30 MAY - 10 FEB - ANNUAL DAY (M. MANUREWA)
- THU 31 MAY - 10 FEB - ANNUAL DAY (M. MANUREWA)
- FRI 1 JUN - 10 FEB - ANNUAL DAY (M. MANUREWA)
- SAT 2 JUN - 10 FEB - ANNUAL DAY (M. MANUREWA)
- SUN 3 JUN - 10 FEB - ANNUAL DAY (M. MANUREWA)
- MON 4 JUN - 10 FEB - ANNUAL DAY (M. MANUREWA)
- TUE 5 JUN - 10 FEB - ANNUAL DAY (M. MANUREWA)
- WED 6 JUN - 10 FEB - ANNUAL DAY (M. MANUREWA)
- THU 7 JUN - 10 FEB - ANNUAL DAY (M. MANUREWA)
- FRI 8 JUN - 10 FEB - ANNUAL DAY (M. MANUREWA)
- SAT 9 JUN - 10 FEB - ANNUAL DAY (M. MANUREWA)
- SUN 10 JUN - 10 FEB - ANNUAL DAY (M. MANUREWA)
- MON 11 JUN - 10 FEB - ANNUAL DAY (M. MANUREWA)
- TUE 12 JUN - 10 FEB - ANNUAL DAY (M. MANUREWA)
- WED 13 JUN - 10 FEB - ANNUAL DAY (M. MANUREWA)
- THU 14 JUN - 10 FEB - ANNUAL DAY (M. MANUREWA)
- FRI 15 JUN - 10 FEB - ANNUAL DAY (M. MANUREWA)
- SAT 16 JUN - 10 FEB - ANNUAL DAY (M. MANUREWA)
- SUN 17 JUN - 10 FEB - ANNUAL DAY (M. MANUREWA)
- MON 18 JUN - 10 FEB - ANNUAL DAY (M. MANUREWA)
- TUE 19 JUN - 10 FEB - ANNUAL DAY (M. MANUREWA)
- WED 20 JUN - 10 FEB - ANNUAL DAY (M. MANUREWA)
- THU 21 JUN - 10 FEB - ANNUAL DAY (M. MANUREWA)
- FRI 22 JUN - 10 FEB - ANNUAL DAY (M. MANUREWA)
- SAT 23 JUN - 10 FEB - ANNUAL DAY (M. MANUREWA)
- SUN 24 JUN - 10 FEB - ANNUAL DAY (M. MANUREWA)
- MON 25 JUN - 10 FEB - ANNUAL DAY (M. MANUREWA)
- TUE 26 JUN - 10 FEB - ANNUAL DAY (M. MANUREWA)
- WED 27 JUN - 10 FEB - ANNUAL DAY (M. MANUREWA)
- THU 28 JUN - 10 FEB - ANNUAL DAY (M. MANUREWA)
- FRI 29 JUN - 10 FEB - ANNUAL DAY (M. MANUREWA)
- SAT 30 JUN - 10 FEB - ANNUAL DAY (M. MANUREWA)
- SUN 1 JUL - 10 FEB - ANNUAL DAY (M. MANUREWA)
- MON 2 JUL - 10 FEB - ANNUAL DAY (M. MANUREWA)
- TUE 3 JUL - 10 FEB - ANNUAL DAY (M. MANUREWA)
- WED 4 JUL - 10 FEB - ANNUAL DAY (M. MANUREWA)
- THU 5 JUL - 10 FEB - ANNUAL DAY (M. MANUREWA)
- FRI 6 JUL - 10 FEB - ANNUAL DAY (M. MANUREWA)
- SAT 7 JUL - 10 FEB - ANNUAL DAY (M. MANUREWA)
- SUN 8 JUL - 10 FEB - ANNUAL DAY (M. MANUREWA)
- MON 9 JUL - 10 FEB - ANNUAL DAY (M. MANUREWA)
- TUE 10 JUL - 10 FEB - ANNUAL DAY (M. MANUREWA)
- WED 11 JUL - 10 FEB - ANNUAL DAY (M. MANUREWA)
- THU 12 JUL - 10 FEB - ANNUAL DAY (M. MANUREWA)
- FRI 13 JUL - 10 FEB - ANNUAL DAY (M. MANUREWA)
- SAT 14 JUL - 10 FEB - ANNUAL DAY (M. MANUREWA)
- SUN 15 JUL - 10 FEB - ANNUAL DAY (M. MANUREWA)
- MON 16 JUL - 10 FEB - ANNUAL DAY (M. MANUREWA)
- TUE 17 JUL - 10 FEB - ANNUAL DAY (M. MANUREWA)
- WED 18 JUL - 10 FEB - ANNUAL DAY (M. MANUREWA)
- THU 19 JUL - 10 FEB - ANNUAL DAY (M. MANUREWA)
- FRI 20 JUL - 10 FEB - ANNUAL DAY (M. MANUREWA)
- SAT 21 JUL - 10 FEB - ANNUAL DAY (M. MANUREWA)
- SUN 22 JUL - 10 FEB - ANNUAL DAY (M. MANUREWA)
- MON 23 JUL - 10 FEB - ANNUAL DAY (M. MANUREWA)
- TUE 24 JUL - 10 FEB - ANNUAL DAY (M. MANUREWA)
- WED 25 JUL - 10 FEB - ANNUAL DAY (M. MANUREWA)
- THU 26 JUL - 10 FEB - ANNUAL DAY (M. MANUREWA)
- FRI 27 JUL - 10 FEB - ANNUAL DAY (M. MANUREWA)
- SAT 28 JUL - 10 FEB - ANNUAL DAY (M. MANUREWA)
- SUN 29 JUL - 10 FEB - ANNUAL DAY (M. MANUREWA)
- MON 30 JUL - 10 FEB - ANNUAL DAY (M. MANUREWA)
- TUE 31 JUL - 10 FEB - ANNUAL DAY (M. MANUREWA)
- WED 1 AUG - 10 FEB - ANNUAL DAY (M. MANUREWA)
- THU 2 AUG - 10 FEB - ANNUAL DAY (M. MANUREWA)
- FRI 3 AUG - 10 FEB - ANNUAL DAY (M. MANUREWA)
- SAT 4 AUG - 10 FEB - ANNUAL DAY (M. MANUREWA)
- SUN 5 AUG - 10 FEB - ANNUAL DAY (M. MANUREWA)
- MON 6 AUG - 10 FEB - ANNUAL DAY (M. MANUREWA)
- TUE 7 AUG - 10 FEB - ANNUAL DAY (M. MANUREWA)
- WED 8 AUG - 10 FEB - ANNUAL DAY (M. MANUREWA)
- THU 9 AUG - 10 FEB - ANNUAL DAY (M. MANUREWA)
- FRI 10 AUG - 10 FEB - ANNUAL DAY (M. MANUREWA)
- SAT 11 AUG - 10 FEB - ANNUAL DAY (M. MANUREWA)
- SUN 12 AUG - 10 FEB - ANNUAL DAY (M. MANUREWA)
- MON 13 AUG - 10 FEB - ANNUAL DAY (M. MANUREWA)
- TUE 14 AUG - 10 FEB - ANNUAL DAY (M. MANUREWA)
- WED 15 AUG - 10 FEB - ANNUAL DAY (M. MANUREWA)
- THU 16 AUG - 10 FEB - ANNUAL DAY (M. MANUREWA)
- FRI 17 AUG - 10 FEB - ANNUAL DAY (M. MANUREWA)
- SAT 18 AUG - 10 FEB - ANNUAL DAY (M. MANUREWA)
- SUN 19 AUG - 10 FEB - ANNUAL DAY (M. MANUREWA)
- MON 20 AUG - 10 FEB - ANNUAL DAY (M. MANUREWA)
- TUE 21 AUG - 10 FEB - ANNUAL DAY (M. MANUREWA)
- WED 22 AUG - 10 FEB - ANNUAL DAY (M. MANUREWA)
- THU 23 AUG - 10 FEB - ANNUAL DAY (M. MANUREWA)
- FRI 24 AUG - 10 FEB - ANNUAL DAY (M. MANUREWA)
- SAT 25 AUG - 10 FEB - ANNUAL DAY (M. MANUREWA)
- SUN 26 AUG - 10 FEB - ANNUAL DAY (M. MANUREWA)
- MON 27 AUG - 10 FEB - ANNUAL DAY (M. MANUREWA)
- TUE 28 AUG - 10 FEB - ANNUAL DAY (M. MANUREWA)
- WED 29 AUG - 10 FEB - ANNUAL DAY (M. MANUREWA)
- THU 30 AUG - 10 FEB - ANNUAL DAY (M. MANUREWA)
- FRI 31 AUG - 10 FEB - ANNUAL DAY (M. MANUREWA)
- SAT 1 SEP - 10 FEB - ANNUAL DAY (M. MANUREWA)
- SUN 2 SEP - 10 FEB - ANNUAL DAY (M. MANUREWA)
- MON 3 SEP - 10 FEB - ANNUAL DAY (M. MANUREWA)
- TUE 4 SEP - 10 FEB - ANNUAL DAY (M. MANUREWA)
- WED 5 SEP - 10 FEB - ANNUAL DAY (M. MANUREWA)
- THU 6 SEP - 10 FEB - ANNUAL DAY (M. MANUREWA)
- FRI 7 SEP - 10 FEB - ANNUAL DAY (M. MANUREWA)
- SAT 8 SEP - 10 FEB - ANNUAL DAY (M. MANUREWA)
- SUN 9 SEP - 10 FEB - ANNUAL DAY (M. MANUREWA)
- MON 10 SEP - 10 FEB - ANNUAL DAY (M. MANUREWA)
- TUE 11 SEP - 10 FEB - ANNUAL DAY (M. MANUREWA)
- WED 12 SEP - 10 FEB - ANNUAL DAY (M. MANUREWA)
- THU 13 SEP - 10 FEB - ANNUAL DAY (M. MANUREWA)
- FRI 14 SEP - 10 FEB - ANNUAL DAY (M. MANUREWA)
- SAT 15 SEP - 10 FEB - ANNUAL DAY (M. MANUREWA)
- SUN 16 SEP - 10 FEB - ANNUAL DAY (M. MANUREWA)
- MON 17 SEP - 10 FEB - ANNUAL DAY (M. MANUREWA)
- TUE 18 SEP - 10 FEB - ANNUAL DAY (M. MANUREWA)
- WED 19 SEP - 10 FEB - ANNUAL DAY (M. MANUREWA)
- THU 20 SEP - 10 FEB - ANNUAL DAY (M. MANUREWA)
- FRI 21 SEP - 10 FEB - ANNUAL DAY (M. MANUREWA)
- SAT 22 SEP - 10 FEB - ANNUAL DAY (M. MANUREWA)
- SUN 23 SEP - 10 FEB - ANNUAL DAY (M. MANUREWA)
- MON 24 SEP - 10 FEB - ANNUAL DAY (M. MANUREWA)
- TUE 25 SEP - 10 FEB - ANNUAL DAY (M. MANUREWA)
- WED 26 SEP - 10 FEB - ANNUAL DAY (M. MANUREWA)
- THU 27 SEP - 10 FEB - ANNUAL DAY (M. MANUREWA)
- FRI 28 SEP - 10 FEB - ANNUAL DAY (M. MANUREWA)
- SAT 29 SEP - 10 FEB - ANNUAL DAY (M. MANUREWA)
- SUN 30 SEP - 10 FEB - ANNUAL DAY (M. MANUREWA)
- MON 1 OCT - 10 FEB - ANNUAL DAY (M. MANUREWA)
- TUE 2 OCT - 10 FEB - ANNUAL DAY (M. MANUREWA)
- WED 3 OCT - 10 FEB - ANNUAL DAY (M. MANUREWA)
- THU 4 OCT - 10 FEB - ANNUAL DAY (M. MANUREWA)
- FRI 5 OCT - 10 FEB - ANNUAL DAY (M. MANUREWA)
- SAT 6 OCT - 10 FEB - ANNUAL DAY (M. MANUREWA)
- SUN 7 OCT - 10 FEB - ANNUAL DAY (M. MANUREWA)
- MON 8 OCT - 10 FEB - ANNUAL DAY (M. MANUREWA)
- TUE 9 OCT - 10 FEB - ANNUAL DAY (M. MANUREWA)
- WED 10 OCT - 10 FEB - ANNUAL DAY (M. MANUREWA)
- THU 11 OCT - 10 FEB - ANNUAL DAY (M. MANUREWA)
- FRI 12 OCT - 10 FEB - ANNUAL DAY (M. MANUREWA)
- SAT 13 OCT - 10 FEB - ANNUAL DAY (M. MANUREWA)
- SUN 14 OCT - 10 FEB - ANNUAL DAY (M. MANUREWA)
- MON 15 OCT - 10 FEB - ANNUAL DAY (M. MANUREWA)
- TUE 16 OCT - 10 FEB - ANNUAL DAY (M. MANUREWA)
- WED 17 OCT - 10 FEB - ANNUAL DAY (M. MANUREWA)
- THU 18 OCT - 10 FEB - ANNUAL DAY (M. MANUREWA)
- FRI 19 OCT - 10 FEB - ANNUAL DAY (M. MANUREWA)
- SAT 20 OCT - 10 FEB - ANNUAL DAY (M. MANUREWA)
- SUN 21 OCT - 10 FEB - ANNUAL DAY (M. MANUREWA)
- MON 22 OCT - 10 FEB - ANNUAL DAY (M. MANUREWA)
- TUE 23 OCT - 10 FEB - ANNUAL DAY (M. MANUREWA)
- WED 24 OCT - 10 FEB - ANNUAL DAY (M. MANUREWA)
- THU 25 OCT - 10 FEB - ANNUAL DAY (M. MANUREWA)
- FRI 26 OCT - 10 FEB - ANNUAL DAY (M. MANUREWA)
- SAT 27 OCT - 10 FEB - ANNUAL DAY (M. MANUREWA)
- SUN 28 OCT - 10 FEB - ANNUAL DAY (M. MANUREWA)
- MON 29 OCT - 10 FEB - ANNUAL DAY (M. MANUREWA)
- TUE 30 OCT - 10 FEB - ANNUAL DAY (M. MANUREWA)
- WED 31 OCT - 10 FEB - ANNUAL DAY (M. MANUREWA)
- THU 1 NOV - 10 FEB - ANNUAL DAY (M. MANUREWA)
- FRI 2 NOV - 10 FEB - ANNUAL DAY (M. MANUREWA)
- SAT 3 NOV - 10 FEB - ANNUAL DAY (M. MANUREWA)
- SUN 4 NOV - 10 FEB - ANNUAL DAY (M. MANUREWA)
- MON 5 NOV - 10 FEB - ANNUAL DAY (M. MANUREWA)
- TUE 6 NOV - 10 FEB - ANNUAL DAY (M. MANUREWA)
- WED 7 NOV - 10 FEB - ANNUAL DAY (M. MANUREWA)
- THU 8 NOV - 10 FEB - ANNUAL DAY (M. MANUREWA)
- FRI 9 NOV - 10 FEB - ANNUAL DAY (M. MANUREWA)
- SAT 10 NOV - 10 FEB - ANNUAL DAY (M. MANUREWA)
- SUN 11 NOV - 10 FEB - ANNUAL DAY (M. MANUREWA)
- MON 12 NOV - 10 FEB - ANNUAL DAY (M. MANUREWA)
- TUE 13 NOV - 10 FEB - ANNUAL DAY (M. MANUREWA)
- WED 14 NOV - 10 FEB - ANNUAL DAY (M. MANUREWA)
- THU 15 NOV - 10 FEB - ANNUAL DAY (M. MANUREWA)
- FRI 16 NOV - 10 FEB - ANNUAL DAY (M. MANUREWA)
- SAT 17 NOV - 10 FEB - ANNUAL DAY (M. MANUREWA)
- SUN 18 NOV - 10 FEB - ANNUAL DAY (M. MANUREWA)
- MON 19 NOV - 10 FEB - ANNUAL DAY (M. MANUREWA)
- TUE 20 NOV - 10 FEB - ANNUAL DAY (M. MANUREWA)
- WED 21 NOV - 10 FEB - ANNUAL DAY (M. MANUREWA)
- THU 22 NOV - 10 FEB - ANNUAL DAY (M. MANUREWA)
- FRI 23 NOV - 10 FEB - ANNUAL DAY (M. MANUREWA)
- SAT 24 NOV - 10 FEB - ANNUAL DAY (M. MANUREWA)
- SUN 25 NOV - 10 FEB - ANNUAL DAY (M. MANUREWA)
- MON 26 NOV - 10 FEB - ANNUAL DAY (M. MANUREWA)
- TUE 27 NOV - 10 FEB - ANNUAL DAY (M. MANUREWA)
- WED 28 NOV - 10 FEB - ANNUAL DAY (M. MANUREWA)
- THU 29 NOV - 10 FEB - ANNUAL DAY (M. MANUREWA)
- FRI 30 NOV - 10 FEB - ANNUAL DAY (M. MANUREWA)
- SAT 1 DEC - 10 FEB - ANNUAL DAY (M. MANUREWA)
- SUN 2 DEC - 10 FEB - ANNUAL DAY (M. MANUREWA)
- MON 3 DEC - 10 FEB - ANNUAL DAY (M. MANUREWA)
- TUE 4 DEC - 10 FEB - ANNUAL DAY (M. MANUREWA)
- WED 5 DEC - 10 FEB - ANNUAL DAY (M. MANUREWA)
- THU 6 DEC - 10 FEB - ANNUAL DAY (M. MANUREWA)
- FRI 7 DEC - 10 FEB - ANNUAL DAY (M. MANUREWA)
- SAT 8 DEC - 10 FEB - ANNUAL DAY (M. MANUREWA)
- SUN 9 DEC - 10 FEB - ANNUAL DAY (M. MANUREWA)
- MON 10 DEC - 10 FEB - ANNUAL DAY (M. MANUREWA)
- TUE 11 DEC - 10 FEB - ANNUAL DAY (M. MANUREWA)
- WED 12 DEC - 10 FEB - ANNUAL DAY (M. MANUREWA)
- THU 13 DEC - 10 FEB - ANNUAL DAY (M. MANUREWA)
- FRI 14 DEC - 10 FEB - ANNUAL DAY (M. MANUREWA)
- SAT 15 DEC - 10 FEB - ANNUAL DAY (M. MANUREWA)
- SUN 16 DEC - 10 FEB - ANNUAL DAY (M. MANUREWA)
- MON 17 DEC - 10 FEB - ANNUAL DAY (M. MANUREWA)
- TUE 18 DEC - 10 FEB - ANNUAL DAY (M. MANUREWA)
- WED 19 DEC - 10 FEB - ANNUAL DAY (M. MANUREWA)
- THU 20 DEC - 10 FEB - ANNUAL DAY (M. MANUREWA)
- FRI 21 DEC - 10 FEB - ANNUAL DAY (M. MANUREWA)
- SAT 22 DEC - 10 FEB - ANNUAL DAY (M. MANUREWA)
- SUN 23 DEC - 10 FEB - ANNUAL DAY (M. MANUREWA)
- MON 24 DEC - 10 FEB - ANNUAL DAY (M. MANUREWA)
- TUE 25 DEC - 10 FEB - ANNUAL DAY (M. MANUREWA)
- WED 26 DEC - 10 FEB - ANNUAL DAY (M. MANUREWA)
- THU 27 DEC - 10 FEB - ANNUAL DAY (M. MANUREWA)
- FRI 28 DEC - 10 FEB - ANNUAL DAY (M. MANUREWA)
- SAT 29 DEC - 10 FEB - ANNUAL DAY (M. MANUREWA)
- SUN 30 DEC - 10 FEB - ANNUAL DAY (M. MANUREWA)
- MON 31 DEC - 10 FEB - ANNUAL DAY (M. MANUREWA)

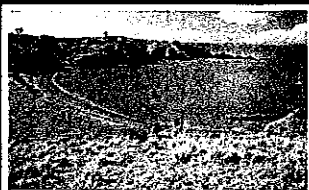
MY CONTACT DETAILS

- Phone: 266-8268 ext 3079
- Email: juniorp@manurewa-int.school.nz



Search: @RewalIntermediate

SURVIVAL CAMP



Our first two modules of the year will lead into our school wide Survival Camp at Home Bay, on Motutapu Island in Week 3. Students will take part in a week long camp where they will prepare their own meals and participate in various team-building activities.

MI NIGHT MARKET



In the lead up to camp, as a class, we will be fundraising to cover costs primarily through our school Night Market on Friday 8 February. Team 79 would benefit from parental participation in both the Night Market and Camp - please don't hesitate to contact me if you wish to be involved in either or both of these events!