

# MORE THAN JUST A SCHOOL...



## MANUREWA INTERMEDIATE SCHOOL

*'Adventurous risk takers; persistent focussed achievement'*



**Winner of the Prime Minister's Education  
Excellence Supreme Award 2017**

**PROSPECTUS**

# A SCHOOL FOR EVERYONE

## ...AS SEEN BY THE STUDENTS...

Manurewa Intermediate School is really caring and it celebrates our differences! It's a fun, crazy, diverse, happy and most of all committed place - M.I is the type of place where everyone looks out for one another; everybody loves it here. Everybody wants to be here at M.I! - Codilee Siasau

Our staff work so hard for us students to be able to do things like trips, school camp, sports tournaments, free lunches and so much more!  
- Adi Ana Nauarabota



M.I. isn't like other schools - the teachers are here to help; they don't care if you have to ask for help 10 times! You're taught to have fun while learning.

It makes it different because of how diverse it is and how many opportunities there are for the students here. For example, the wide range of sport opportunities, cultural groups, student councils and also our period six activities. - Anita Malo

I like M.I because there are a lot of opportunities for kids and everyone is a friend here. Teachers have connections to kids that make us feel like they are friends of our own. - Iosefa Pati

Our school also gives students opportunities to finish their homework after school with clubs like homework club. Manurewa Intermediate has made my learning experiences better and has made me improve my risk taking skills so much!  
- Jessica Finau

The teachers are very caring and passionate about their students. Being at M.I has helped me with my self esteem and built my confidence up. The support that you get at M.I is amazing - Mark Murray

We have more than two turfs with lots to do on them! Our school has laptops and a TV in every classroom with teachers that are always there for you! Everyone has high expectations in all of our classes! - Cortez Gataua

I like M.I because this school has lots of committed Learning Assistants and really awesome Teachers. This school has amazing students and leaders to guide others in the right direction. - Hamuera Cribb

Manurewa Intermediate is so different because we aren't just limited to such specific things like Reading, Writing and Math etc. but the school has so many different subjects that are fun. It gives us the opportunity to find out our uniqueness about ourselves! It even teaches us to not always be inside the box but to think outside of it! - Romeo-King Leauanae

M.I has amazing lessons where we can express ourselves more than we could in school hours. We don't have hardly any bullying, fights or drama in our school, which is amazing! - Danielle Steven

M.I. has awesome module classes, which allow us to explore things throughout all of the NZ school curriculum. With this it allows us to find hobbies, interests, and learn about things we didn't know before and normally wouldn't in the average school. We also celebrate peoples' achievements, cultures, and kindness. We make it known that we appreciate those who make M.I a better place! - Juhi Ram

I like how everyone is included and no one is left out at M.I, also how the staff are kind and encouraging and work really hard; we all appreciate it! So our school is a lot different to many other schools - we get lots of opportunities and what I love the most is how vibrant it is! - Benjamin Ye

There's loads of cool things at Manurewa Intermediate like Boys Night Out, Girls Night In and, of course, Survival Camp. - Axle Whare

# ...AND EDUCATION REVIEW OFFICE

All schools are reviewed by the Education Review Office every three years on average, commenting on school performance and student achievement. Our full report is available online ([www.ero.govt.nz](http://www.ero.govt.nz) or [www.manurewaint.school.nz](http://www.manurewaint.school.nz)) but please find below bullet statements from our full report which came out in May 2017. Our 2017 report resulted in us achieving a back to back 4-5 year review, (as we received a 4-5 in 2012 as well!) which only 10% of schools receive.

- The school responds very well to all learners whose learning and achievement need acceleration.
- Learners benefit from a persistent approach to raising their achievement.
- They learn to be socially and emotionally competent, resilient and optimistic about the future.
- Children show confidence in their identity, language and culture. This strong cultural identity provides a bridge for many students in their learning.
- School leaders relentlessly pursue equity and excellence for all learners.
- Leaders and teachers foster children's confidence and skills to be active members of influence in school and in their wider community.
- The concept of aroha underpins school practices.
- The school's curriculum emphasises the attributes for lifelong learning and citizenship.
- Children are achieving excellent educational outcomes. School performance has been sustained over time through well-focused, embedded processes and practices.



# PREAMBLE

This prospectus should leave you wondering, imagining and excited about the journey our students are on. It introduces you, and is designed, to give you an outline of life at Manurewa Intermediate School. It does not attempt to provide all the answers, but we trust, acts as an informative guide that will help answer any queries you may have and lets you know how our school operates and the things we do.

The Prospectus is divided into six sections:

- Who Are We?
- Stay in Touch
- Keeping Safe and Healthy
- Your Child's Learning
- School Life
- General Information

It also conveys to you the hopes we have for your children and conjures up something of the complexity and energy of the experience that is life at our school. We trust you will find it informative and relevant. Welcome to Manurewa Intermediate School!





# WELCOME...FROM THE PRINCIPAL

Kia Ora, Fakaalofa Lahi atu, Malo e lelei, Talofa lava, Taloha, Kia Orana,  
Ni Hao, Buenos Dias, Chao, Malo ni, Habari Dobar Dan, Namaste, Salam

In 1978 and 1979 I had two of the most fun, exciting, effective and memorable years of my schooling career as a Year 7 and 8 student (or in our day Form 1 and 2), here, at Manurewa Intermediate School. It is my goal that all our students now have that same experience!

Intermediate is a time of tremendous growth and development, of challenges and fun and a time where kids want to start making decisions for themselves. I feel incredibly proud and indeed privileged to be back here...as the Principal of Manurewa Intermediate.

I am a passionate and energetic educator and I am so passionate about my role that if I won Lotto today I would still be here tomorrow. This is because I love the energy, the vibrancy and the things we can do in schools to give kids the best deal possible. I believe that education is the most liberating experience any individual can participate in.

It is much more dangerous than Bungy Jumping! It is much harder than mountain climbing; it is much more exhausting than marathon running and it is much more challenging than any reality TV programme can dream up! It is the trip of a life-time!

Education can make you rich and the lack of it can keep you poor! Education gives you choices and helps you know what it is that you really want to do. Education helps us see other people in new ways. It opens our minds and provides us all with new possibilities.

It is much more than reading and writing and maths, it's more than behaving well and being positive and respectful, it's who you are and who I am and how we teach and learn from each other....

With my diverse national and international educational leadership experiences and teaching background, I am passionate about the leadership process **'making it happen for your kids!'** I believe it is important for schools and leaders to create an energy that is contagious and creative; one that impacts directly on the quality and effectiveness of the teaching and learning process, ensuring we are all fully involved in, challenged, enthused by and indeed capable of contributing positively and willingly to our school community and the Manukau community at large as we ensure Manurewa Intermediate School is **the** exemplar for effective multicultural education, and indeed matching, if not surpassing, any international high class school in the world as our

kids deserve **the** best ... **the** best opportunities and experiences, **the** best resources and facilities and, most importantly, **the** best teaching possible!

The staff welcomes parent contact and feedback; and is more than willing to discuss anything with you; remembering however, that class time is paramount. An appointment through the school office ensures your queries or concerns are addressed with the attention they deserve.

The current School Prospectus will be supported at the beginning of next year with a comprehensive student diary entitled, 'M.I. Planner' distributed to all students. This will explain school routines, programmes and much more in detail.

We look forward to meeting you and getting to know you as you find your part in "The Manurewa Intermediate Experience!"

Welcome!

*Iain. C. Taylor.*

Iain Taylor

Principal



## ...WHAT WE BELIEVE...

Schooling is about much more than teaching. It's about nurturing growth, encouraging development, supporting effort, recognising achievement, broadening horizons, challenging viewpoints, guiding progress, instilling values, fostering ideas.

It's about developing partnerships between home and school.

For Manurewa Intermediate, schooling is about 'motoring and moving on up', and providing a series of experiences and opportunities that will challenge, stimulate and enable all to achieve in an environment that fosters respect, differences and support. I hope that everyone who becomes involved with us, whatever the context, will feel part of our community and the school structure at its heart. The greater the level of interest and cooperation of our parents, the better our school will be able to serve the needs of our children as your support for school systems and activities and interest in your child's education is directly related to his/her attitude to school and learning.

The students at Manurewa Intermediate always come first. You can expect your child to be well taught, well looked after and, in partnership with you, they will receive the best possible education over their intermediate school career. We promote the total all round development of your child, and provide a unique, comprehensive, effective, enjoyable and challenging educational experience that will equip your child with skills, knowledge, and attitudes, as well as the values necessary to live and work as we move deeper into the twenty first century. We all accept that today's children will be working in a world considerably different from what we see today.

It is this that forms the challenge for us – to establish a vision and then set in place a plan to meet the needs of your child in a personalised way.

We meet this challenge by actively combining challenging experiences with academic rigour and creative opportunity in the personal education of every student. However a curriculum of this ambitious nature cannot be confined to the classroom alone. The distinction of curricular and extracurricular components is invalid in our opinion. In order to develop students across a spectrum of intelligences we integrate experiences on the sports fields, in outdoor education, using technology, through service projects, in the art room, and in musical and dramatic performances. It is our philosophy that an active challenging curriculum provides students with the opportunity to develop all their intelligences and these then strengthen each other leading to well balanced, perceptive individuals who have the confidence to take action to improve not only their own lives, but also the lives of others. We expect our students to be fully and constructively involved in a range of activities on offer and to do so with an energy that is contagious and positive.



# CHARTER 2021-2023

## VISION

Adventurous risk takers; persistent focussed achievement!

### OUR MORAL VALUES

- Fairness
- Honesty
- Manaakitanga
- Pride
- Respect
- Responsibility
- Tolerance
- Trust

### QUALITIES

- Confidence
- Energy
- Enthusiasm
- Flexibility
- Friendliness
- Inspiration
- Leadership
- Motivation
- Optimism
- Passion
- Resilience
- Versatility

### OUR EDUCATIONAL VALUES

- Challenge + Competition
- Communication
- Creativity + Innovation
- Effort + Commitment
- Engagement + Teamwork
- Excellence
- Fun
- Self Management + Independence

## STRATEGIC GOALS

Develop academically powerful students

Develop an effective School Culture: Living our vision and values

Develop students who are socially aware and socially active

Develop Potential

Develop Community

## ANNUAL PLAN

(specific years, goals and objectives)

- Operational Plan
- Achievement Targets



# OUR ESSENCE

DREAM

Broadening horizons;  
seeking dreams

Achievement

Expecting and  
recognising  
achievement

Challenging  
viewpoints

Encourage  
development

Cultural  
interaction and  
acceptance

Fostering  
ideas and  
experiences

ATTAIN

Supporting  
effort

Instilling  
values

Developing  
partnerships

- School and Home
- Students and students
- Staff and students

Nurturing Growth

EMBARK

# OUR GRADUATE PROFILE

Our kids will  
leave Manurewa  
Intermediate with...

## RESPECTFUL

A respect for self, others and property.

## S.U.S.T

A strong set of personal beliefs, with a social conscience and an acceptable level of self-belief/self-esteem that makes them capable of dealing with success and/or disappointment in a realistic way.

## CURIOUS

A love of learning, with a thirst for knowledge and curiosity about life - to have ambition. They will have a continual desire to strive to be the best they can be with a strong and responsible work ethic and attitude.

## ADVENTUROUS

A good grounding in the academic basics and experiences across a broad curriculum.

## COMPASSIONATE

Compassion, honesty, initiative and be trustworthy.



## OPTIMISTIC

A positive, optimistic and confident attitude and approach with a sense of fun.

## RISK TAKER

A comfort with risk, be industrious and persistent with challenges.

## COMMUNICATOR

Effective communication and collaboration skills with a well-rounded outlook on life.

# SO... WHAT IS AN INTERMEDIATE SCHOOL EDUCATION ALL ABOUT?

**“An effective ‘intermediate education’ can’t be beaten and this is our aim!”**

The function and importance of an intermediate school, or middle years education is clear.

It is to provide transition education between primary and secondary; between childhood and adolescence; and between family and a widening social group. Intermediate caters to a narrow class level and age range, enabling teachers and resources to be tightly focussed. By the time children reach the intermediate stage they are ready, and indeed eager, for wider curriculum, sporting, emotional, social and cultural experiences.

An effective intermediate school education is a launching pad for all areas of life. Not just academics, but an all-round development in all the above areas. Our aim is to develop young people who are both confident and sensibly cautious, as they develop to their full potential, with their individuality found, encouraged and celebrated!

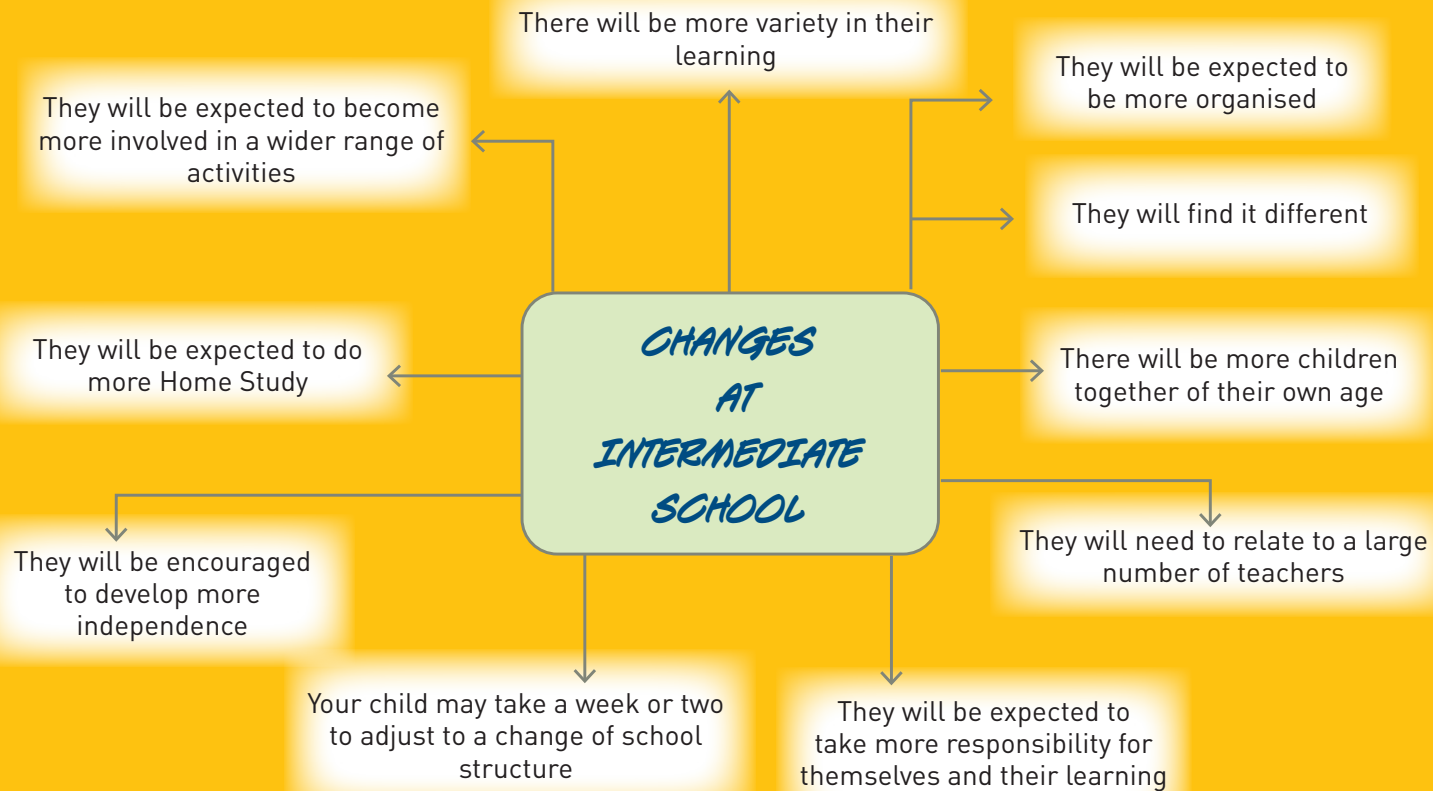
At Manurewa Intermediate we believe in fully capitalising on the physical, emotional, intellectual and social changes that occur in the adolescent aged child, to thoroughly and effectively teach the basic skills, in addition to offering a broad spectrum of further learning opportunities, helping to develop a child’s strengths and individuality.

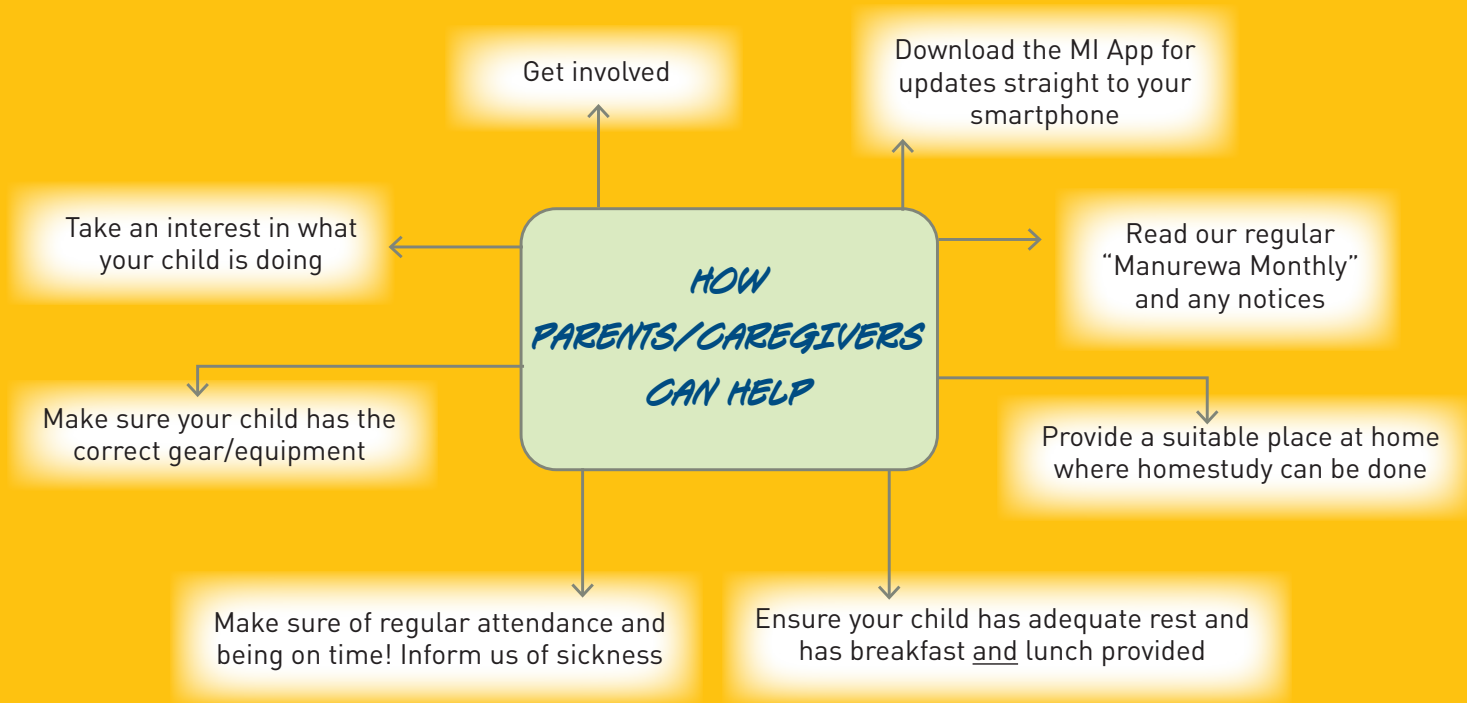
The effective ‘intermediate school’ experience can be one of

the most productive, memorable and relevant experiences of one’s educational life and this is something we aim to ensure we do. The intermediate aged child’s sense of fun in learning and ability to learn needs to be positively harnessed and motivated by teachers who care, are competent in a vast array of areas and who are able to interact with this specialised age group.

Finally, Manurewa Intermediate School will be extremely profitable, enjoyable and exciting for all our students. It is a chance to demonstrate ‘the best’ in primary education and to allow and give children the opportunity to explore their very real potential.







**Most Importantly:**

Contact us if you are unhappy, concerned or worried about your child at home or at school. There will always be someone available to take with you.

# WHO ARE WE?

## Our School Community

- Decile 1 (ranked from 1-10, with 10 being highest in socio economic factors)
- Diverse cultural, social and economic backgrounds
- Over 25 ethnic groups
- Pasifika 51%, Māori 36%, European 4%, Asian 7%, Other 2%
- Superb interest and involvement in our school from parents/whanau and community



## Our People

- Intermediate School from Year 7 – 8 (11 – 13 yrs)
- Approximately 920 enthusiastic, motivated and delightful students.
- A significant advantage we have over most other intermediate schools is the access our students have to all specialist teaching staff eg. Humanities (Reading and Writing), Math, Science, Sustainable Enterprise, Languages, Dance & Drama, Music, Art, ICT, PE, Food Tech, X-PLO Tech (Wood, Metal and Plastics), Learning Support Teachers AND to Specialist Support Staff e.g. Social Worker, Counsellor, Learning Assistants





## Board of Trustees

- Comprising up to 5 elected parent representatives
- Responsible for school governance ie: policy
- Meets at 5.30pm twice per term – in staffroom on the last Wednesday of the month. (reminder dates advised via newsletter). Visitors welcome!
- Meetings include an “Open Forum”, a “Curriculum presentation” by staff and a “Student Presentation” by specific classes
- Contact can be made with the Presiding Member, via the School Office
- See Prospectus insert

## Support Services

- Community Dental Hub + Health Centre
- Speech Language Therapists
- Resource Teachers of Learning & Behaviour
- Coordinated by our Deputy Principal: Guidance & Support. Contact can be made directly to her or via classroom teachers if you require further information

## Our School itself

- 43 classrooms
- Art Room
- Performing Arts: Music Room and Music Auditorium; Dance & Drama Studio
- MI Professional Learning Hub
- Fitness Hub
- Four Science Labs
- Hall/Auditorium – with Lighting rig
- MiTV Studio
- Gymnasium
- ICT Lab
- Digi-Comp Lab
- Café
- Food Tech Room
- X-PLO Tech Room – Wood, Metal, Plastic
- Numerous Learning Support Rooms
- School Marae, and Fale
- InterChallenge Adventure Playground
- Guidance Suite
- Two Artificial Sports Turfs - One with a roof
- Basketball, Netball, Tennis and Hockey Courts
- Outdoor Cricket Wicket
- Fields for soccer/rugby/athletics track
- Landscaped Garden areas
- Worm Farm
- Peace Garden; Native Medicinal Garden; Edible Garden
- Recycle System: Plastics, Glass, Cans and Paper/ Card
- Chicken Coops, Piggery, Beehive and Goat Pen
- Skatersphere – Skate Park
- See Prospectus insert



# STAY IN TOUCH

## Office

The office is open 7.30am – 4.30pm

## Open Door Policy

- Communication is vital!
- Come in and make an appointment if there is anything you want to discuss with us
- 8.25am – 3.15pm is not generally a good time to try and nab the teacher as this is the busiest time of their day. Teachers can be contacted directly on their classroom phone extension. Extension numbers are 30(+ room number)
- See Prospectus insert

## Student Involved Conferences

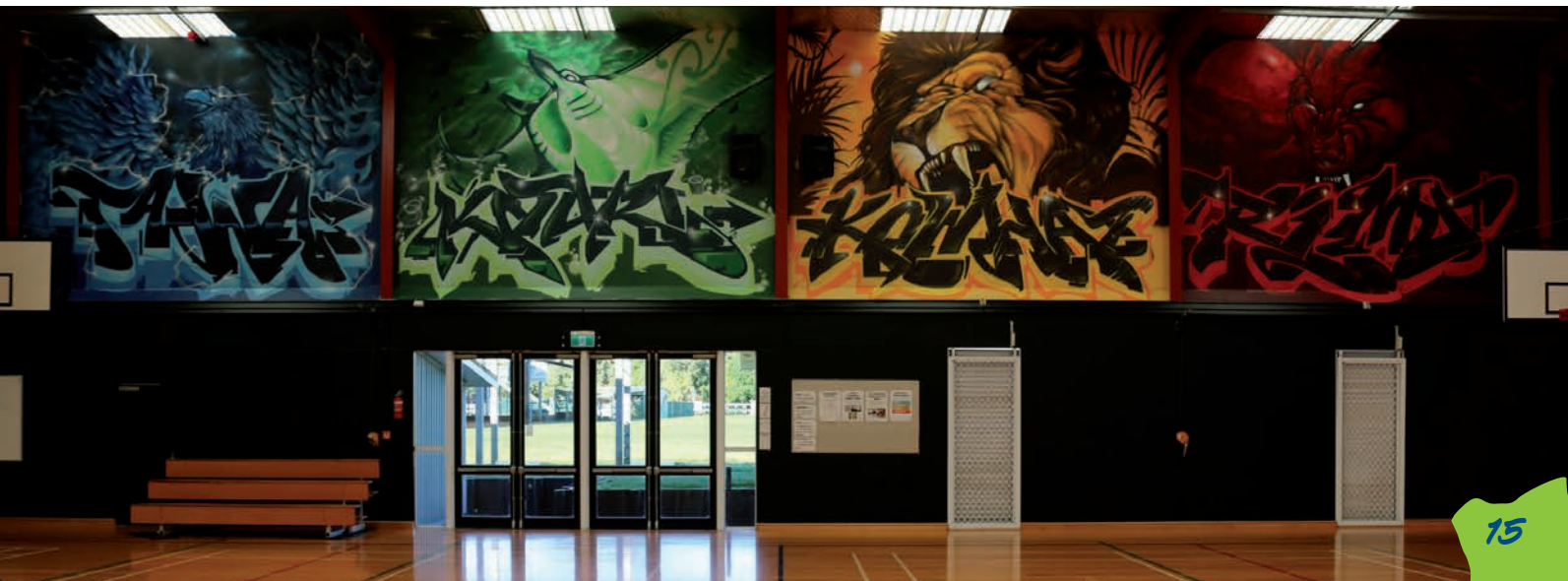
- Three times a year you, your child and your child's teacher review progress and set goals
- See Prospectus insert

## School Calendar

See Prospectus insert

## Term Dates

See Prospectus insert



## Reports

- You receive three written reports each year: two discussion sheets and one detailed report at the end of the year, as well as three face-to-face conferences.
- See Prospectus insert.

## Class Letters

Come out at the beginning of every term to all parents/caregivers from each form teacher. This will detail any trips/special events for the term and the topic the class is focussing on, along with any other general information.

## Concerns/Complaints/Queries?

- Please speak directly to the person first
- See Prospectus insert.

## Emergencies

We require the following:

- Home phone number
- Work phone number
- Mobile phone number (if you have one)
- Two emergency numbers of other people
- Any Custody details
- Please advise us, immediately, of any changes to this information.

## Enrolment/Withdrawal

See Prospectus insert: Note enrolments start Mondays ONLY.

## Visiting School/Helping In Class

- All visitor's wear a Visitors Sticker to allow them to be on school property – collect one from the 'electronic check-in' located in the office upon arrival.
- We welcome Parent Helpers; speak to a teacher if keen!
- See Prospectus insert.



# KEEPING SAFE AND HEALTHY

## Medical Condition

If your child has a medical condition please tell us.

## Crossing Roads

Get to school safely! Use the traffic lights crossing right opposite the school on Russell Road before and after school!



## Medical Room

If your child comes to the Medical Room we will respond to their needs, then call you to collect them, if warranted, ASAP.

## Evacuation/Emergency Procedures

These are practised every term – all children know where the evacuation area is ie. The GOAT. This is displayed in every room.

## Arriving at School Late/or Leaving Early

- Report in at reception: if late to school and to collect Student Pass if leaving school during the day
- No children are to leave the school grounds during the day unless a note/pass has been received.

## Being Fit and Healthy

Abundant opportunities for participation in sporting and other physical activities enable the physical development and the competitive and collaborative skills of our students to flourish. As fitness improves, self-esteem and leadership potential blossom – both on and off the field. Along the way we encourage students to understand and appreciate each other's strengths and limitations, and to discover the feeling of goodwill and camaraderie that results from a game well played and a physical challenge overcome. All children participate in Fitness, PE, Recreation and inter class/school sports in our endeavour to be fit.





### Healthy Food and Drink

- Lots of healthy food – children can eat as much as they need at break times.
- As part of the Ka Ora, Ka Ako – Healthy lunch in schools programme, each child is provided lunch each and every day free of charge. This is a nourishing and healthy meal that is served after lunch play.
- Children are encouraged to drink water throughout the day – bring a named drink bottle everyday.
- The School Tuckshop is open daily at interval only.
- See Prospectus insert.

### Adventure Playground

We have one InterChallenge Adventure Playground which is specifically designed for intermediate aged children. All are taught to play safely.

### MOU Magic: Keys to Success AND Stepping Up Behaviour Programme

All our children have the right to feel secure and happy at school. We have a programme that provides clear guidelines and management strategies. This ensures a school wide, consistent and effective programme operates! Bullying is not tolerated in any form and the rewarding of good behaviour or work is positively endorsed as often as possible. Inappropriate behaviour is dealt with strongly with a series of consequences that all children are well aware of.

- See Prospectus insert.

### School Access

Via three entrances:

- Russell Rd – x 2
- Beeston Crescent walkway access only.

### NO SMOKING OR VAPING

All our buildings and grounds are NO SMOKING and/or VAPING areas, at all times!

### Internet Usage

See Prospectus insert.

### Food Preparation in Class

See Prospectus insert.



# *MOU MAGIC*

(Moving On Up Behaviour Management Programme)



1. *WE LOOK AFTER EACH OTHER*
2. *WE LOOK AFTER PROPERTY AND OUR ENVIRONMENT*
3. *WE LOOK AFTER OURSELVES*

# YOUR CHILD'S LEARNING

## Class Programmes

All children are taught at their own level. If your child has special abilities or needs in any area, we identify this as early as possible. We have a number of special character classes to address these issues. See Prospectus insert.

## Home Study

All children have Home Study: reading, spelling, basic arithmetic or activities related to the classroom programme. Teachers will advise parents at the beginning of each year about these expectations.

## Inquiry Learning

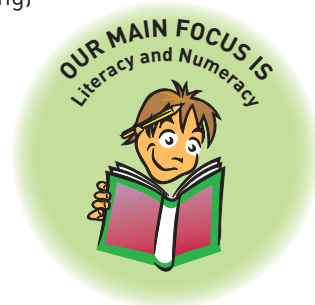
This approach to teaching involves students forming their own questions about a topic, with strong teacher guidance, and having time to explore answers. The students are both the problem posers and problem solvers. It encourages students to examine the complexities of the world and form their own ideas rather than being told the answers!

## Curriculum

- Children have access to all areas of the curriculum:
  - Science
  - Technology - Foods,
  - X-Plo Tech, Digi-Comp
  - Sustainable Enterprise
  - Humanities (Reading and Writing)
  - Physical Education
  - The Arts – Art, Music, Dance & Drama
  - Languages
  - Mathematics
- See Prospectus insert.

## Schoolwide Major Events

- United Nations Festival
- School Musical Production
- STEAM Fair
- Art Exhibition
- Performing Arts Festival.



## Special Programmes

- Discovery Programmes
- Hauora – Mou Magic, Values and Social Skills Programmes
- Life Skills
- Options
- Monday Magic
  - Service
  - Media Studies
  - NZ History
  - Careers
- Friday Frenzy
  - Communication Literacy
  - Foundation Basics
  - Global Discoveries
  - Money Mojo
- Extra Curricular Activities - Period 6
- Whanau Singing
- Recreation
  - Sports
  - Outdoor Pursuits/Camps
  - Fitness
- See Prospectus insert.

## Academic Support & Extension Programmes

- Gifted & Talented
  - Enrichment Class
  - Choir
  - Sports Focus Class
  - Bands
  - Cultural Groups
- Guidance & Support Unit
  - ESOL in class support
  - Literacy Support Programme
  - Pause Prompt Praise (peer tutoring strategies)
  - Quick60
- See Prospectus insert.

## Why Inquiry Learning?

- Vehicle for integration of the curriculum – something that is made even easier within a specialised model by immersing children deeply
- Fosters connected rather than episodic teaching and learning
- Caters for a range of learning styles
- Transferable process across subjects
- Taps into students' natural curiosity.

# SCHOOL LIFE

## School Day

- School starts at 8.30am and ends at 3.15pm
- Students need to be at school by 8.25am!
- Tuesdays end at 2.25pm
- See Prospectus insert .

## Community Council

- Meet every fortnight
- Make suggestions to improve our school.

## Curriculum Council

- Meets every week
- Talks with students about learning
- Decides on topics for the following year.

## Eco Council

- Meets regularly
- Gets actively involved in school-wide initiatives and programmes
- Aims to increase the sustainability of our school, community and global environments.

## Pastoral Council

- Meets regularly
- Helps kids manage their social, emotional and mental health.

## Library

- All classes visit as a whole class
- Open every break time and before and after school
- See Prospectus insert.



## School Senators

- Meet every week
- Comprises two representatives from each of the five school councils.
- Our top tier student leaders
- See Prospectus insert.

## Assemblies

- Assemblies are every Friday at 9:50am. Visitors encouraged. Please come!
- See Prospectus insert.

## Whanau

- All children and staff are attached to a whanau: Rimu/Tawa/Kowhai/Kauri
- Points awarded
- See Prospectus insert.

## Awards, Certificates, Prizegiving and Year 8 Graduation

- We constantly affirm and praise
- See Prospectus insert



# GENERAL INFORMATION

## Stationery

- All children's stationery is provided free of charge
- See Prospectus insert.

## Money

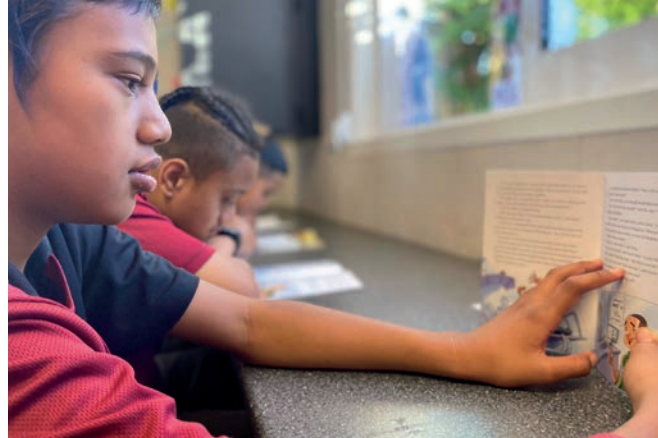
- Money for trips, etc. should go into an envelope labelled with your child's name and room number and given to teachers
- Any requests for money will be forwarded to parents in writing
- See Prospectus insert.

## School Documents

- Available at the School Reception
- Contains long term vision, specific annual plans for the year and much more.

## School Uniform

- All students must wear the set school uniform at all times, and appropriate sporting clothing when involved in any sports
- See Prospectus insert.



## Lost Property

- Lost property is kept at the office
- Children are encouraged to look after their own property
- All clothing/personal gear to be named.

## Car Parking

- Along Russell Road or Kerrydale Rd
- No onsite parking is available – including the turning bay
- Check the "Parking Times" before remaining there for some time.











## *CONTACTS*

76 Russell Road, Manurewa, Manukau 2102

P 09 266 8268 F 09 267 5633

E [office@manurewaint.school.nz](mailto:office@manurewaint.school.nz) W [www.manurewaint.school.nz](http://www.manurewaint.school.nz)